

# PINEYE™ Piney Resin Emulsion

non-toxic biodegradable monoterpene polymer  
CAS 34363-01-4

**FOREVEREST PINEYE™** is a biodegradable emulsion contents of 100% organic piney resin. Non-toxic, no harmful residues detected, a green surfactant for plants to lock water and against UV degradation. **PINEYE™** will saves your pesticide costs and protect your plants in green grow.

## PERFORMANCE TEST

1. Three samples, Sample A with standard emulsion, Sample B with testing emulsion and Sample C without emulsion, they are set up in this test for comparison.
2. To avoid dehydration, the petiole wounds of all collected plants have been dipped into the standard emulsion (as shown on the picture).
3. It is two-days test. ( I ) Spraying samples on the plants at the noon of June 6. ( II ) process in 6 hours outdoor exposure test in the afternoon (Cloudy, 26~28 °C). ( III ) Storage for 15 hours in room shady place in the night. ( IV ) Final process at outdoor exposure test for next 3 hours on June 7. The testing time is 24 hours in total.
4. Results show the proximity of appearance, solubility, film forming ability and water retention. ability between Sample A and Sample B.



Figure.1 Uniform and milky white liquid after adding more water

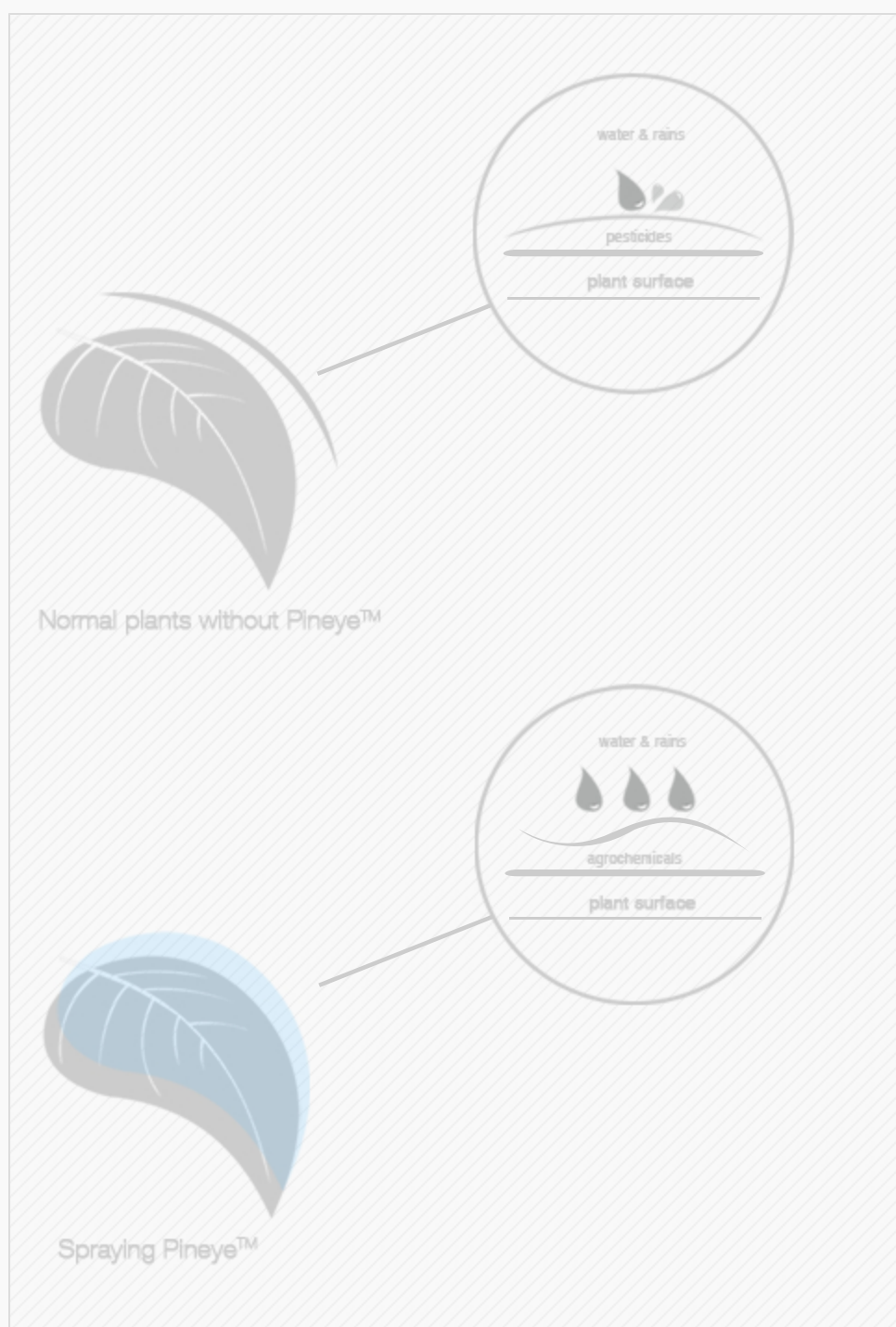


Figure.2 Distribution effects on plants after spraying

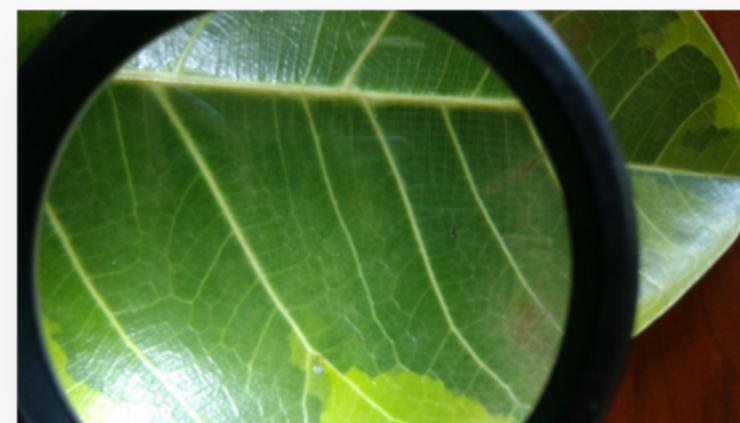


Figure.3 Film forming performances after surface dry



Figure.4 hours after spraying, no wilting or withering condition  
June 6, Afternoon, 26~28 °C  
Left Sample A, Right Sample B



Figure.5 After 6 hours outdoor exposure and 15 hours storage in room, no wilting or withering condition

June 7, Noon, 25~26 °C

Left Sample A  
Middle Sample B  
Right Sample C



Figure.6 After 3 hours in direct sunlight

June 7, Aternoon, 32~33 °C

Left Sample A  
Middle Sample B  
Right Sample C

## RESULTS

- 1、 After 0.5 hours direct sunlight, Sample C shows clear water loss and wilting conditions. After a hour, there are clearly black patches caused by water loss on Sample C, while Sample A and B only become slightly wilting, no brown patches on them.
- 2、 After 3 hours direct sunlight, Sample C shows serious water loss and withering conditions. Plants become wilting and curling, widely with brown patches. Sample A and B both have brown patches on plants at similar degree and time.

## CONTACT WITH US



Foreverest.cn



86 592 5105533



info@foreverest.cn